

Licensing instructions for participating institutions

There are three types of licenses available:

1. Single Use Licensing:

You can request a stand-alone license for a single machine. For this we will need in your request:

- 1) Software Version (i.e. 10.0, 10.1, 10.2 & 10.3)
- 2) License Level (i.e. ArcInfo, ArcView, ArcEditor)
- 3) Number of licenses

Description

You will receive a license file via an email from ESRI that includes ArcGIS 10.x authorization number to use during the authorization process of the software.

2. Concurrent Use Licensing:

2.1 Using your own local server

You can run a local license server for your machines. We encourage this use especially for student computer labs as it makes the installation and management of the software easier. If you want to install a local license server, we need in your license request:

- 1) Software Version (i.e. 10.0, 10.1, 10.2 & 10.3)
- 2) License Level (i.e. ArcInfo, ArcView, ArcEditor)
- 3) Number of Seats

Description

You can transfer the desired quantity of licenses from one server to another directly from within your network.

2.2 Using our OSC server

If your institution IP address ranges are registered and you want to use the license server at OSC, you do not need to request a license file. Figure 1 helps you how to specify the network address of the OSC license server. You can use the network addresses either 27006@license3.epn.osc.edu or 27006@license3.osc.edu.

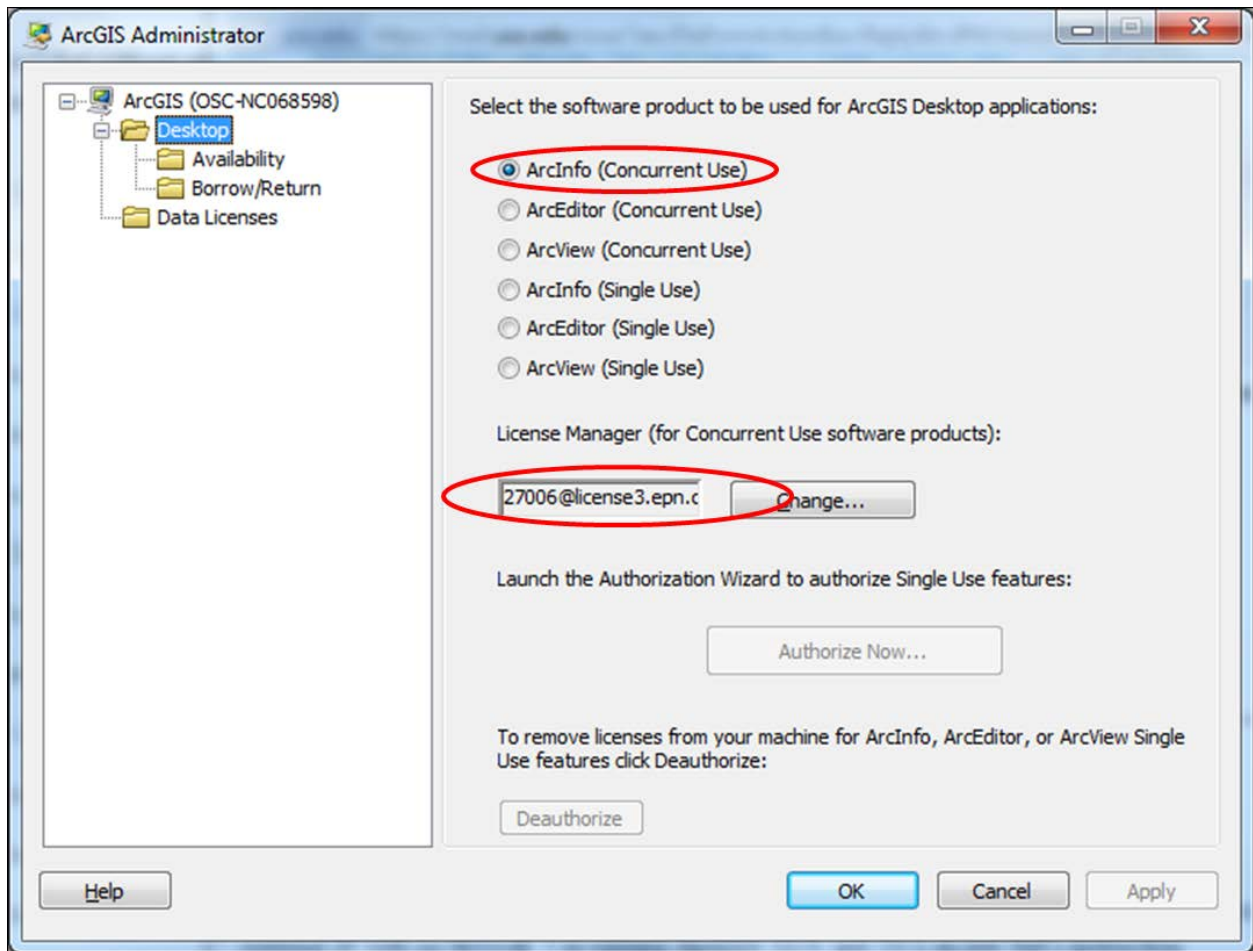


Figure 1. Concurrent Use Sever at OSC Server